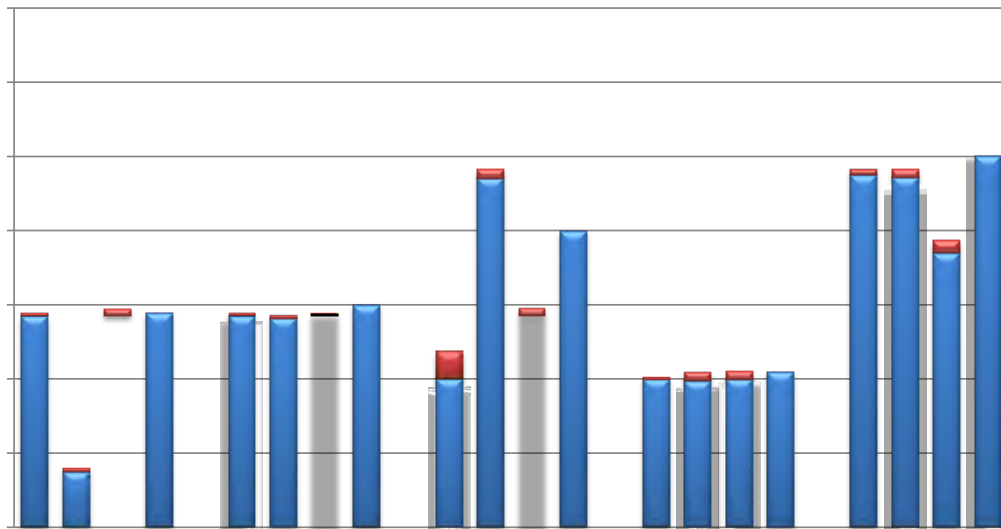


University of Missouri, Tuition and Required Fees History Non-Resident Undergraduate Students

Tuition										
Academic Year (30 Credit Hours)										
	FY2011	FY2012	FY2013	FY2014	FY2015	FY2016	FY2017	FY2018	FY2019	FY2020
Columbia	19,383	20,643	22,191	22,569	23,247	23,943	24,660	25,179	25,707	26,991
Kansas City	18,957	19,905	20,502	20,850	21,162	21,330	21,969	23,067	23,550	24,729
Rolla	19,383	20,643	22,398	23,385	24,087	24,810	25,554	26,322	26,874	27,921
St Louis	18,957	19,905	21,537	24,429	24,795	25,512	26,277	27,327	27,900	29,295

Tuition and Required Fees										
Academic Year (30 Credit Hours)										
	FY2011	FY2012	FY2013	FY2014	FY2015	FY2016	FY2017	FY2018	FY2019	FY2020
Columbia	20,516	21,784	23,366	23,764	24,460	25,166	25,892	26,506	27,042	28,348
Kansas City	20,191	21,197	21,833	22,203	22,535	22,714	23,363	24,490	25,003	26,209
Rolla	20,543	21,879	23,666	24,675	25,396	26,144	26,897	27,693	28,274	29,368
St Louis	20,220	21,206	22,883	24,429	24,795	25,512	26,277	27,327	27,900	29,295



For St. Louis FY2014 is a comprehensive base tuition rate which combines base tuition per credit hour with fees required of all students.

Source: Board Papers